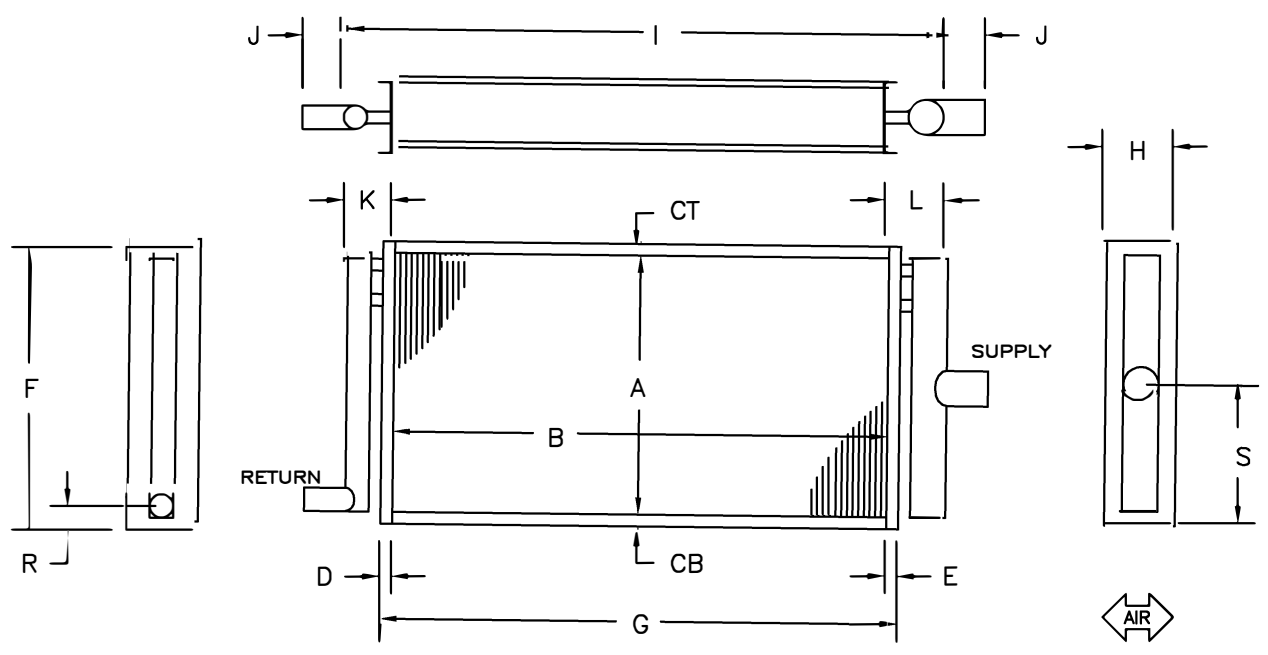


NORTEK™
COIL SOLUTIONS



ROWS: 5/8 - 1, 2 1 1/8 - 1	FINS: 5/8 - 6 thru 14 1 1/8 - 6 thru 14
----------------------------------	---

TUBE WALL		FINS		CASING
5/8 OD	1 1/8 OD	5/8 OD	1 1/8 OD	
.025	.035	.008AL	.010AL	16ga GV
.035	.049	.010AL		
.049		.006CU	.010CU	16ga SS
		.008CU	.010CU	
		.010CU		

HEADERS & TUBES - COPPER ONLY

ITEM	SUPPLY	RETURN	CONNECTIONS	
1			RED BRASS	COPPER
2			MPT	MPT
3				FPT
4				SWT

DIMENSIONAL DATA IN INCHES

	QTY	ROWS	FPI	A	B	CT	CB	D	E	F	G	H	I	J	K	L	S	R
1																		
2																		
3																		
4																		

MODEL NO.				CUST.				TAG:			
1				REP.				PURCHASE ORDER NO.			
2				APP	PRINTS	DATE		SHOP ORDER NO.			
3				FOR APPROVAL		DRAWING NO.		STEAM DISTRIBUTING & STANDARD STEAM			
4				FOR RECORD		NOSS-					

NORTEK™
COIL SOLUTIONS

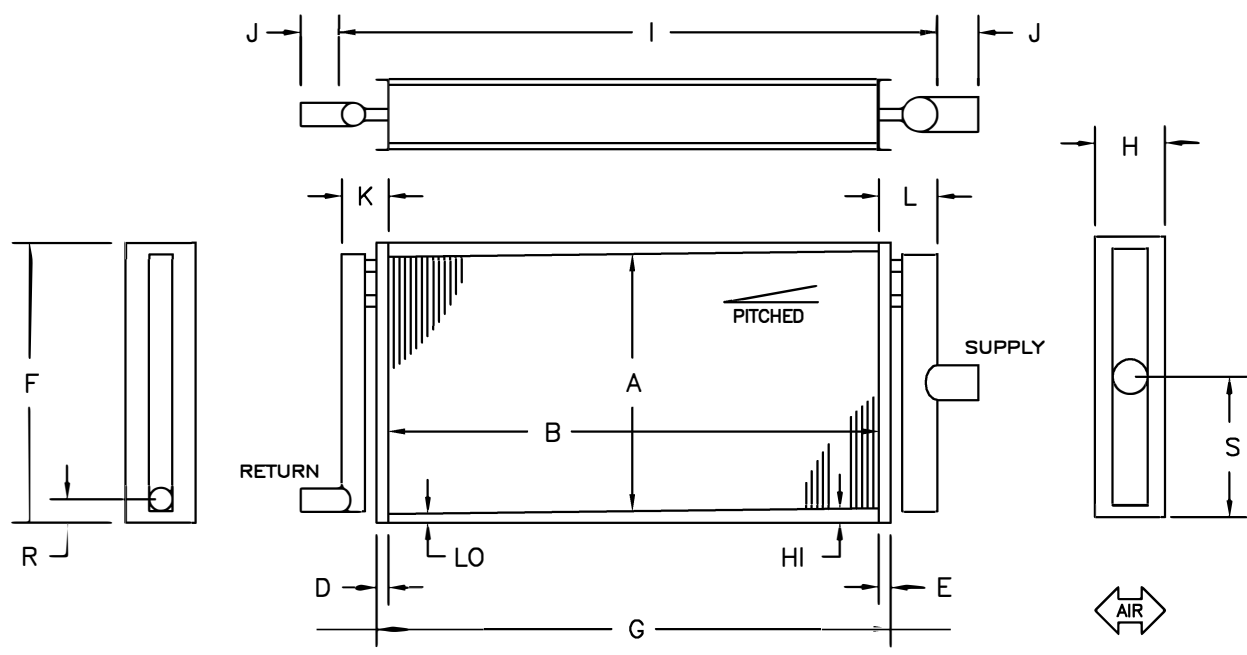
ROWS:
5/8 - 1, 2
1 1/8 - 1

FINS:
5/8 - 6 thru 14
1 1/8 - 6 thru 14

TUBE WALL		FINS		CASING
5/8 OD	1 1/8 OD	5/8 OD	1 1/8 OD	
.025	.035	.008AL	.010AL	16ga GV
.035	.049	.010AL		
.049		.006CU		16ga SS
		.008CU	.010CU	
		.010CU		

HEADERS & TUBES - COPPER ONLY

ITEM	SUPPLY	RETURN	CONNECTIONS	
1			RED BRASS	COPPER
2			MPT	MPT
3				FPT
4				SWT



DIMENSIONAL DATA IN INCHES

	QTY	ROWS	FPI	A	B	HI	LO	D	E	F	G	H	I	J	K	L	S	R
1																		
2																		
3																		
4																		

MODEL NO.				CUST.				TAG:			
1				REP.				PURCHASE ORDER NO.			
2				APP	PRINTS	DATE		SHOP ORDER NO.			
3				FOR APPROVAL		DRAWING NO.		STEAM DISTRIBUTING & STANDARD STEAM			
4				FOR RECORD		NOSSP-					