

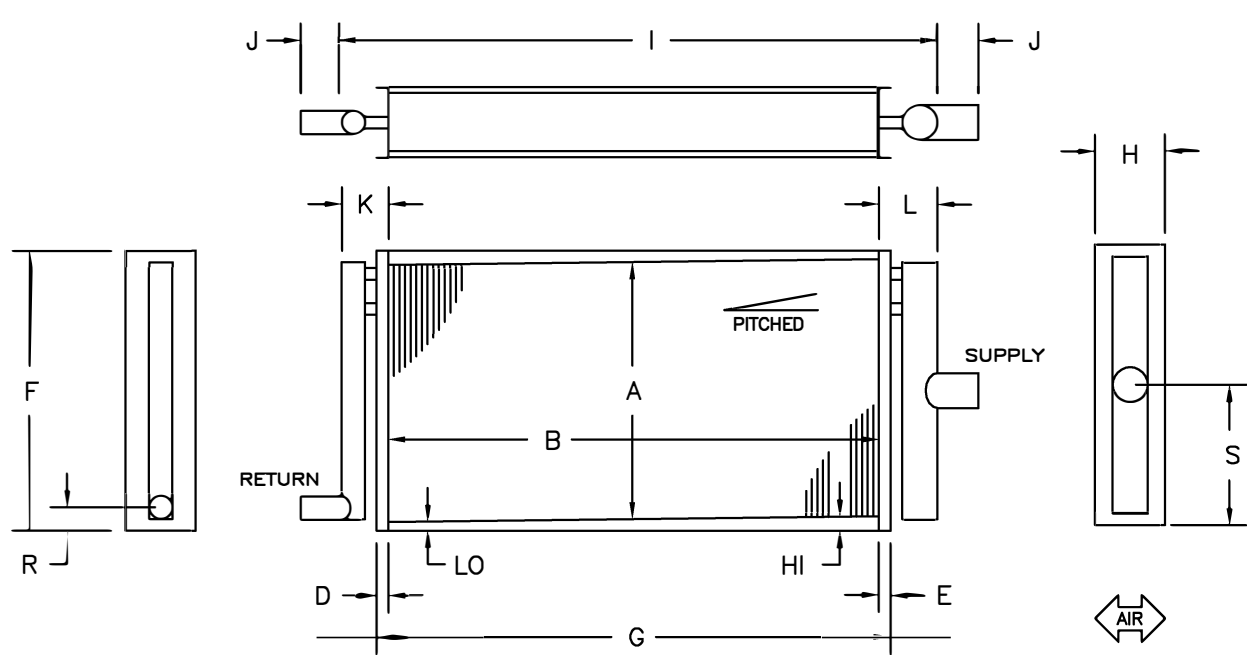
NORTEK™ COIL SOLUTIONS

ROWS: 5/8 - 1, 2 1 1/8 - 1	FINS: 5/8 - 6 thru 14 1 1/8 - 6 thru 14
---	--

TUBE WALL		FINS		CASING
5/8 OD	1 1/8 OD	5/8 OD	1 1/8 OD	
.025	.035	.008AL	.010AL	16ga GV
.035	.049	.010AL		
.049		.006CU	.010CU	16ga SS
		.008CU	.010CU	
		.010CU		

HEADERS & TUBES - COPPER ONLY

ITEM	SUPPLY	RETURN	CONNECTIONS	
1			RED BRASS	COPPER
2			MPT	MPT
3				FPT
4				SWT



DIMENSIONAL DATA IN INCHES

	QTY	ROWS	FPI	A	B	HI	LO	D	E	F	G	H	I	J	K	L	S	R
1																		
2																		
3																		
4																		

MODEL NO.	CUST.	TAG:
1	REP.	PURCHASE ORDER NO.
2	APP PRINTS DATE	SHOP ORDER NO.
3	FOR APPROVAL	DRAWING NO. NOSSP-
4	FOR RECORD	

STEAM DISTRIBUTING
& STANDARD STEAM

NORTEK™ COIL SOLUTIONS

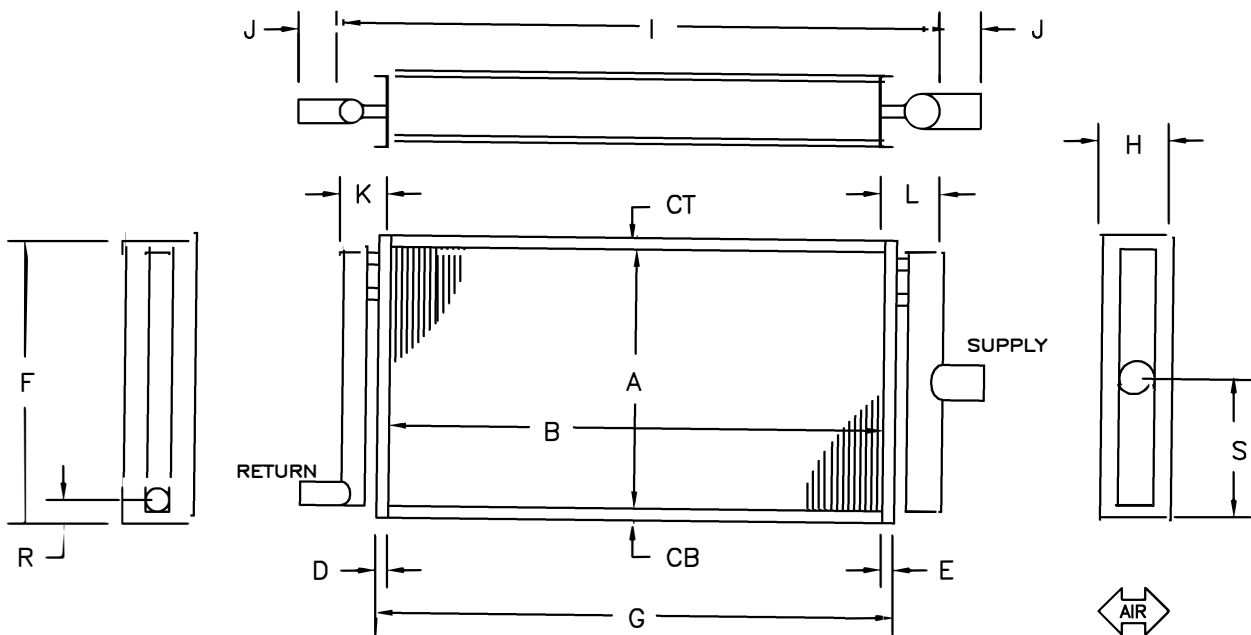
ROWS:
 5/8 - 1, 2
 1 1/8 - 1

FINS:
 5/8 - 6 thru 14
 1 1/8 - 6 thru 14

TUBE WALL		FINS		CASING
5/8 OD	1 1/8 OD	5/8 OD	1 1/8 OD	
.025	.035	.008AL	.010AL	16ga GV
.035	.049	.010AL		
.049		.006CU	.010CU	16ga SS
		.008CU	.010CU	
		.010CU		

HEADERS & TUBES - COPPER ONLY

ITEM	SUPPLY	RETURN	CONNECTIONS	
1			RED BRASS	COPPER
2				MPT
3			MPT	FPT
4				SWT



DIMENSIONAL DATA IN INCHES

	QTY	ROWS	FPI	A	B	CT	CB	D	E	F	G	H	I	J	K	L	S	R
1																		
2																		
3																		
4																		

MODEL NO.				CUST.				TAG:							
1				REP.				PURCHASE ORDER NO.							
2				APP		PRINTS		DATE				SHOP ORDER NO.			
3				FOR APPROVAL		DRAWING NO.		NOSS- STEAM DISTRIBUTING & STANDARD STEAM							
4				FOR RECORD		NOSS-									